



# Design Report

8 Princess Street  
Brighton Le Sands

SJB Architects

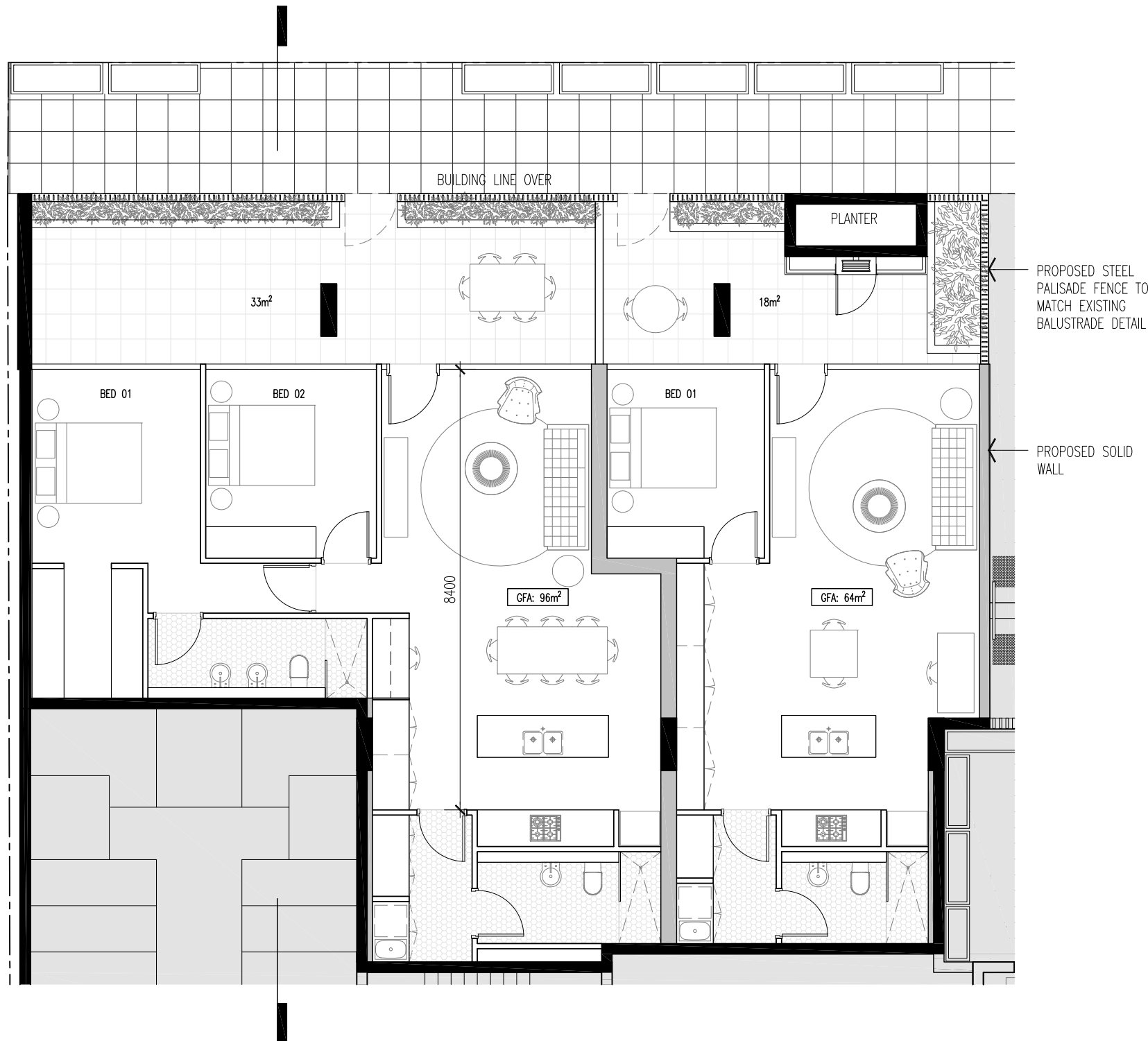


Design Report  
8 Princess Street  
Brighton Le Sands

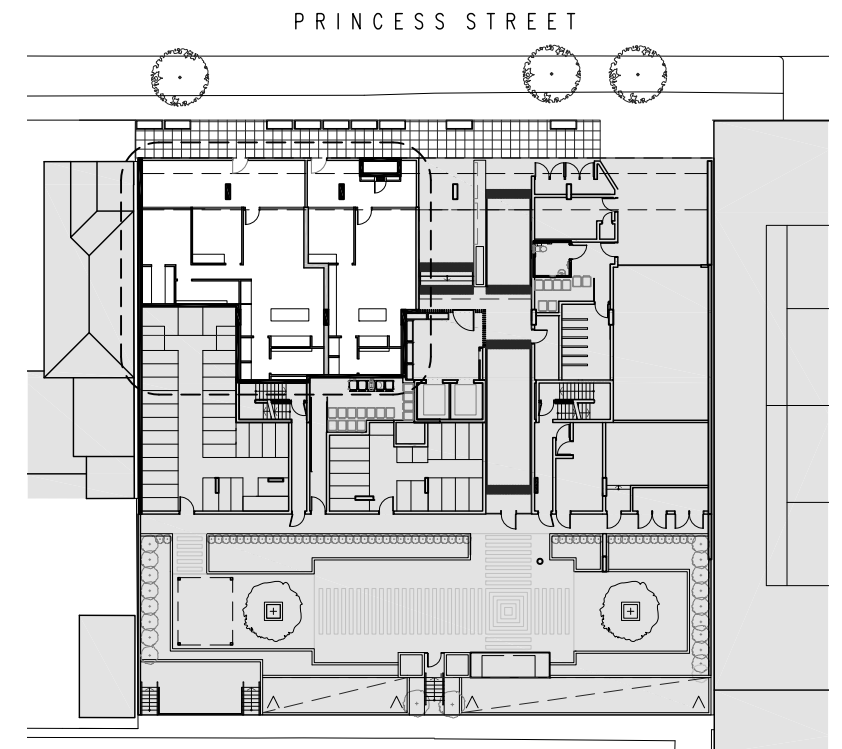
5627  
Date issued: 4 April 2017  
Version: 1.0  
Prepared by: PC  
Checked by: GS

**Contact Details**  
SJB Architects  
Level 2, 490 Crown Street  
Surry Hills NSW 2010  
Australia

T: 61 2 9380 9911  
[architects@sjb.com.au](mailto:architects@sjb.com.au)  
[www.sjb.com.au](http://www.sjb.com.au)



Floor Plan - Proposed Apartment Layout



Existing Floor Plan - Ground Floor





Project

LUMEX

6-14 Princess Street

Job No.

5627

Scale

1:100 @ A3



Drawing

SK02

North Elevation

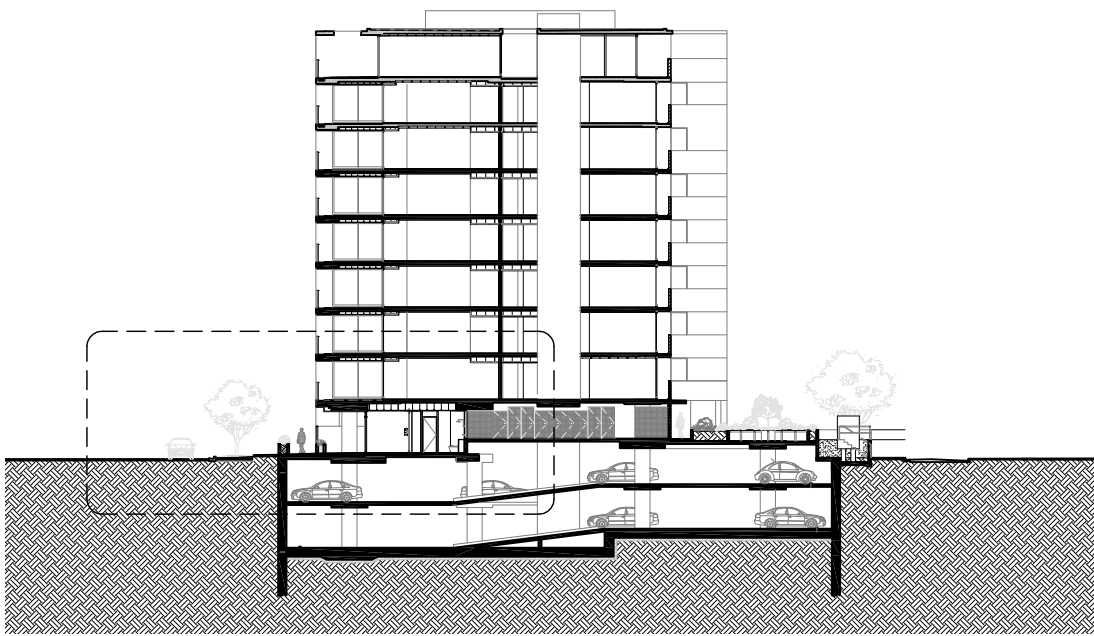
Revision

1.0

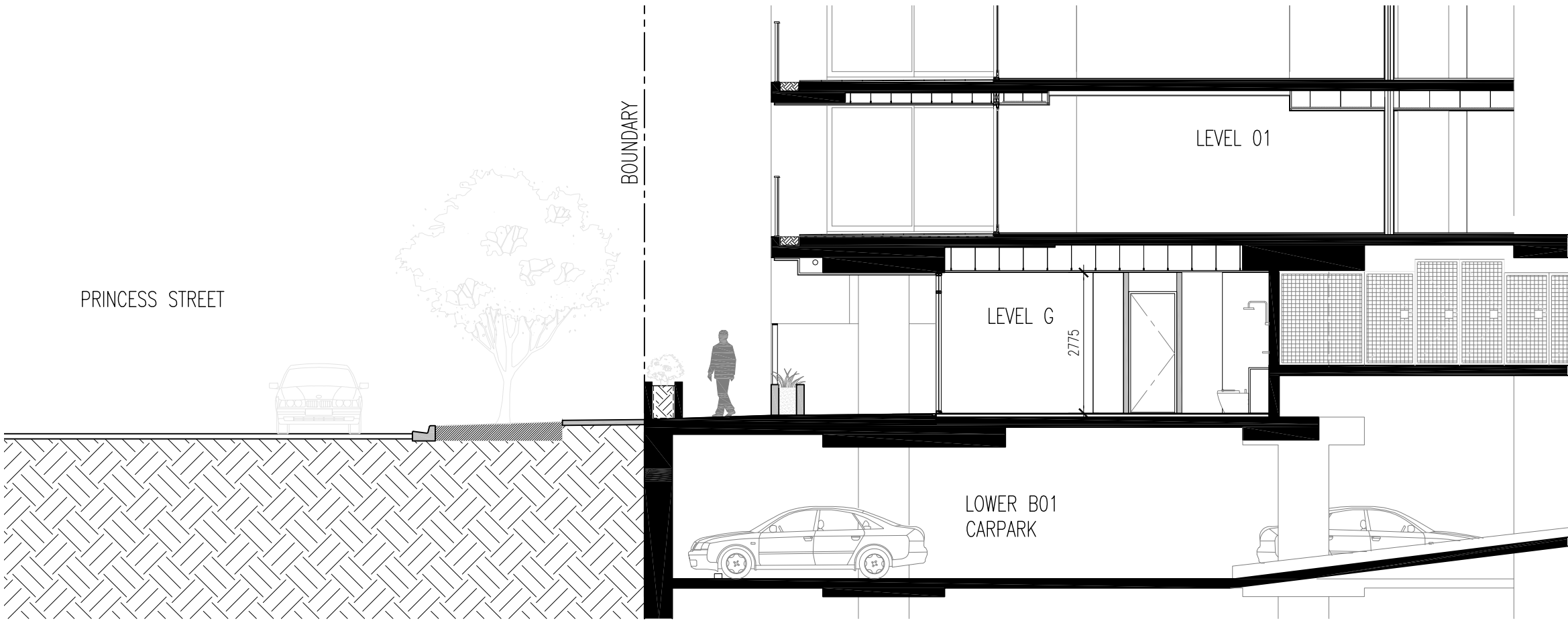
04/04/17

SJB Architects  
Level 2, 490 Crown Street, Surry Hills NSW 2010  
T 61 2 9380 9911 [sjb.com.au](http://sjb.com.au)  
SJB Architecture (NSW) Pty Ltd ACN 081 094 724  
Adam Haddow 7188 John Pradel 7004



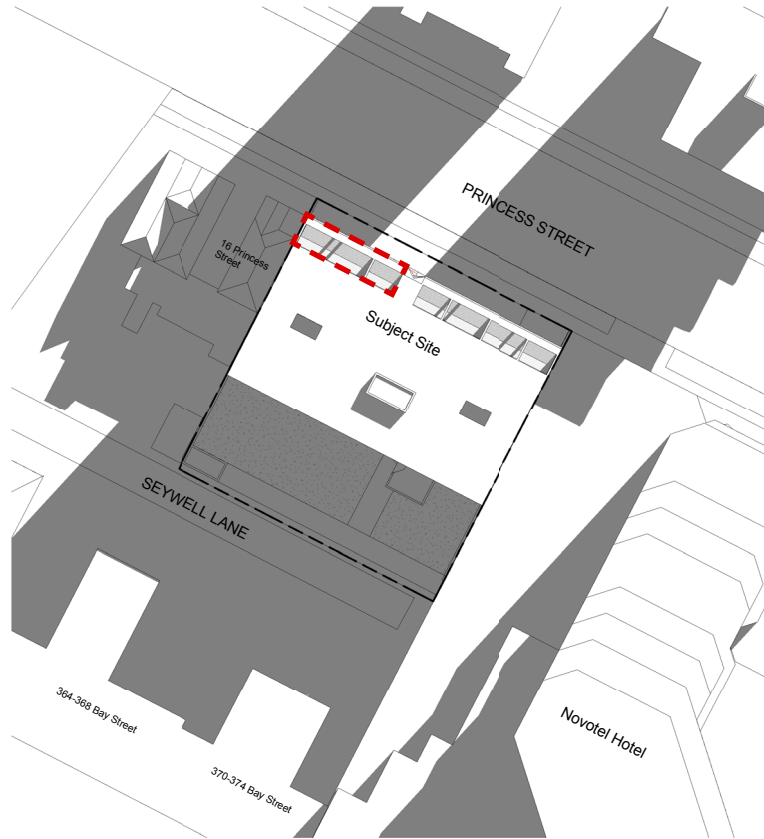


Existing Section

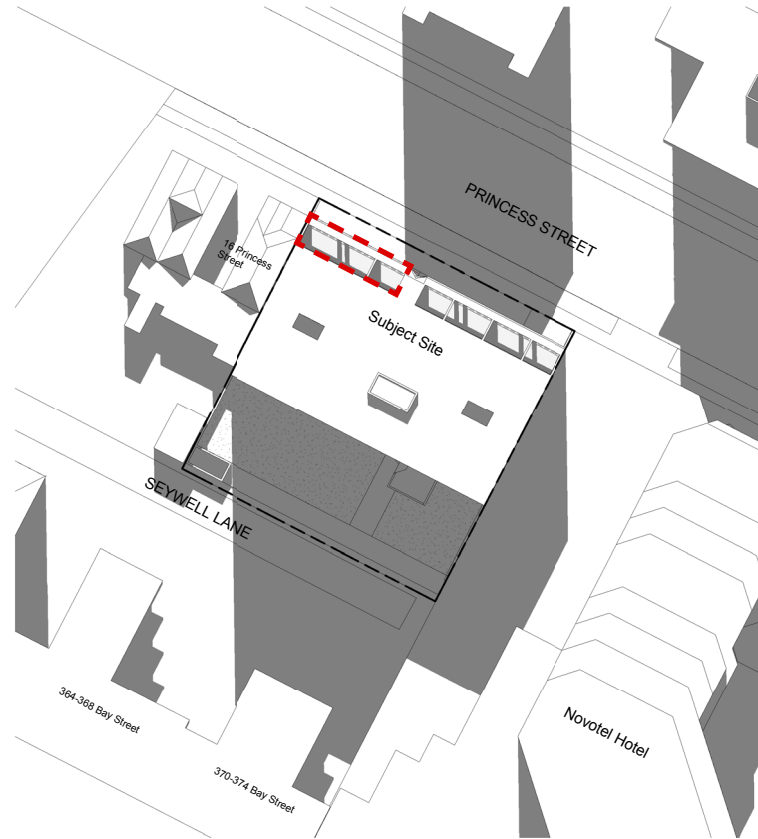


Section - Proposed Apartment Section

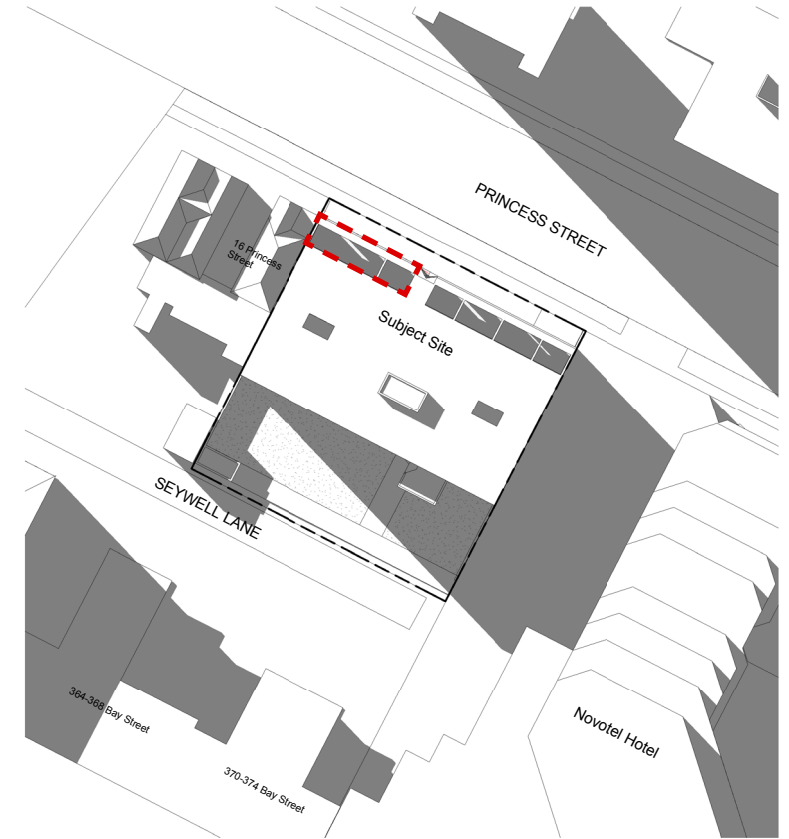




Shadow Diagram - Winter 9am



Shadow Diagram - Winter 12pm



Shadow Diagram - Winter 3pm

### Solar Analysis

Achieves a minimum of 2 hours of direct sunlight on at least 1sq.m of living room glazing between 9am to 3pm, June 21st.

Approved Total: 51/67 (76%)

Proposed Total: 53/69 (76%)

### Cross Ventilation

Approved Total: 53/67 (79%)

Proposed Total: 53/69 (76%)

Project

**LUMEX**

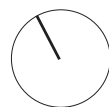
6-14 Princess Street

Job No.

**5627**

Scale

1:100 @ A3



Drawing

**SK04**

Shadow Diagrams

Revision

**1.0**

04/04/17

SJB Architects  
Level 2, 490 Crown Street, Surry Hills NSW 2010  
T 61 2 9380 9911 sjb.com.au  
SJB Architecture (NSW) Pty Ltd ACN 081 094 724  
Adam Haddow 7188 John Pradel 7004



SJB Architects



**Contact Details**

SJB Architects  
Level 2, 490 Crown Street  
Surry Hills NSW 2010  
Australia

T: 61 2 9380 9911  
[architects@sjb.com.au](mailto:architects@sjb.com.au)  
[www.sjb.com.au](http://www.sjb.com.au)